



BURGESS-MANNING

Burgess-Manning, Inc., Subsidiary of Nitram Energy, Inc.

227 Thorn Avenue, Orchard Park, NY 14127

Phone: (716) 662-6540 Fax: (716) 662-6548 Website: www.burgess-manning.com

MODEL BEO - Blower Discharge Silencer

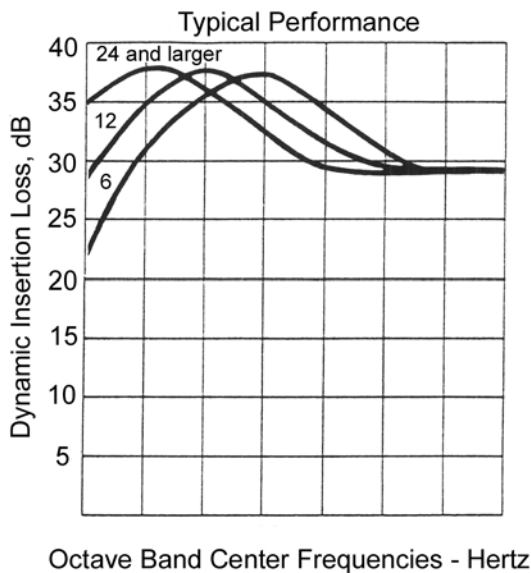
Burgess-Manning Below Transition Speed Blower Discharge Silencer

Description:

Burgess-Manning chambered reactive type blower discharge silencers are specifically designed to provide ideal noise reduction at blower speeds below transition speed.

Features:

- Noise reduction up to 40 dB
- Economically priced
- Long service life
- All welded steel construction for explosion resistant service

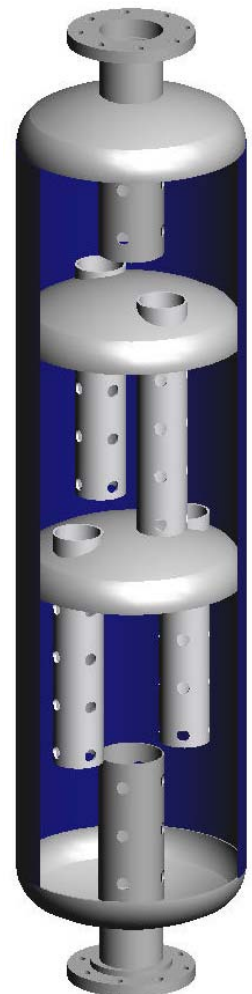


Specifications:

Maximum Noise Attenuation:	40 dB
Typical Sizes:	1" - 24" Larger Sizes Available Upon Request
Standard End Connections:	NPT or 125# ANSI Flanged
Standard Material of Construction:	Carbon Steel
Finish:	Prime Coated Exterior

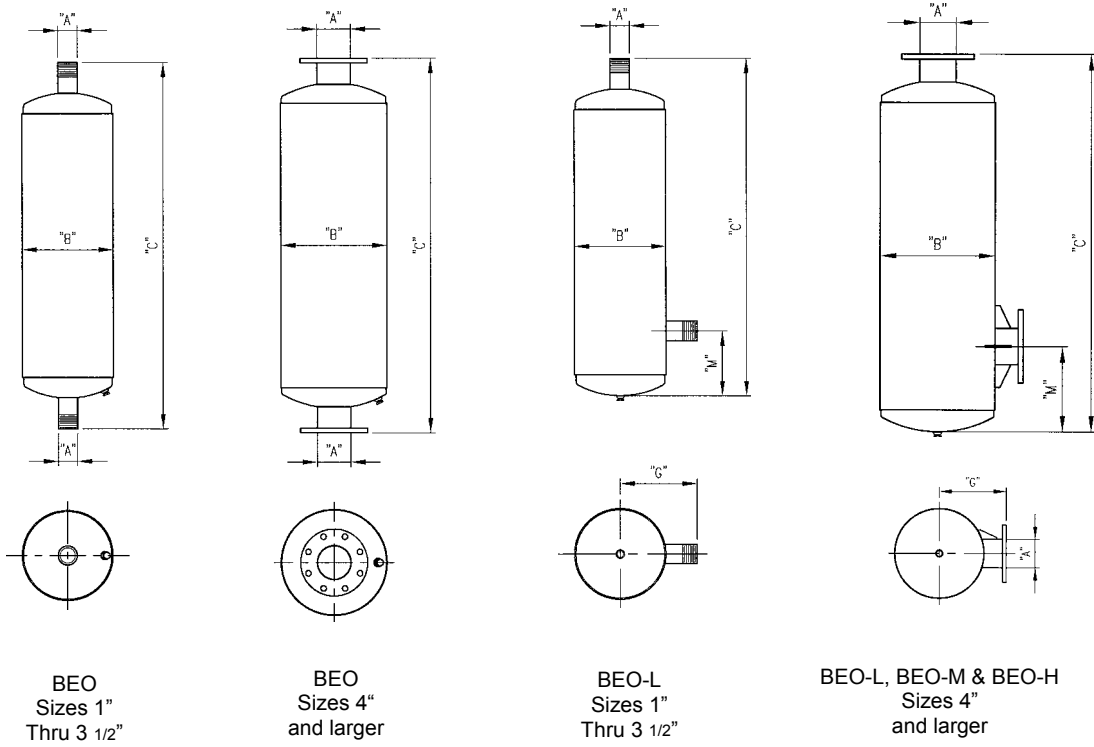
Figure 1.0

Typical Burgess-Manning reactive type silencer



Theory of Operation:

The Burgess-Manning patented principle used in the design of Burgess-Manning silencers involves passing gas flow through snubbing chambers. These snubbing chambers house an arrangement of ported tubes, which attenuate the noise to smooth, quiet flow.



Catalog Number	Dimensions in Inches											Estimated Weight in lbs.	
	All Models		BEO	BEO-L, BEO-M BEO-H		M						BEO BEO-L	BEO-M BEO-H
	A	B	C	C	G	BEO-L		BEO-M		BEO-H			
						Min.	Max.	Min.	Max.	Min.	Max.		
BEO-1	1	6	25	22	5 1/2	2	—	—	—	—	—	10	—
BEO-1.5	1 1/2	8	29	26	6 1/2	4	—	—	—	—	—	15	—
BEO-2	2	10	30	27	7	5	—	—	—	—	—	30	—
BEO-2.5	2 1/2	10	42	40	8	4 1/2	10	—	—	—	—	40	—
BEO-3	3	12	48	44	10	5 1/2	10	—	—	—	—	65	—
BEO-3.5	3 1/2	14	54	51	11	6	12	—	—	34	40	85	102
BEO-4	4	14	66	63	11	6	16	—	—	42	52	115	135
BEO-5	5	16	78	75	11	7	22	—	—	49	64	165	215
BEO-6	6	18	97	94	12	8	29	—	—	61	82	225	310
BEO-8	8	24	110	108	15	10	34	—	—	70	94	410	490
BEO-10	10	30	136	133	18	12	40	—	—	90	119	655	990
BEO-12	12	36	143	141	21	14	46	47	88	93	124	1,090	1,300
BEO-14	14	36	199	196	22	15	69	76	129	130	178	1,470	1,860
BEO-16	16	42	213	209	25	17	68	84	134	137	189	2,100	2,725
BEO-18	18	48	214	211	28	19	68	85	135	139	189	3,050	3,325
BEO-20	20	54	228	225	31	21	68	93	142	153	201	3,525	3,750
BEO-22	22	60	232	228	35	23	74	89	141	149	201	4,800	5,150
BEO-24	24	60	268	264	35	24	85	108	171	174	236	5,825	6,052

Notes: - Flanges are drilled to match 125 lb. American Standard Flanges
- Larger Units available upon request
- Specifications subject to change without notice