

DIAGRAMS

H60-110E



NOTES

[Faint, illegible text and diagrams are visible through the paper, including a large rectangular diagram in the upper middle section and a smaller diagram in the lower middle section. The text is mirrored from the reverse side of the page.]

LATER UNIT

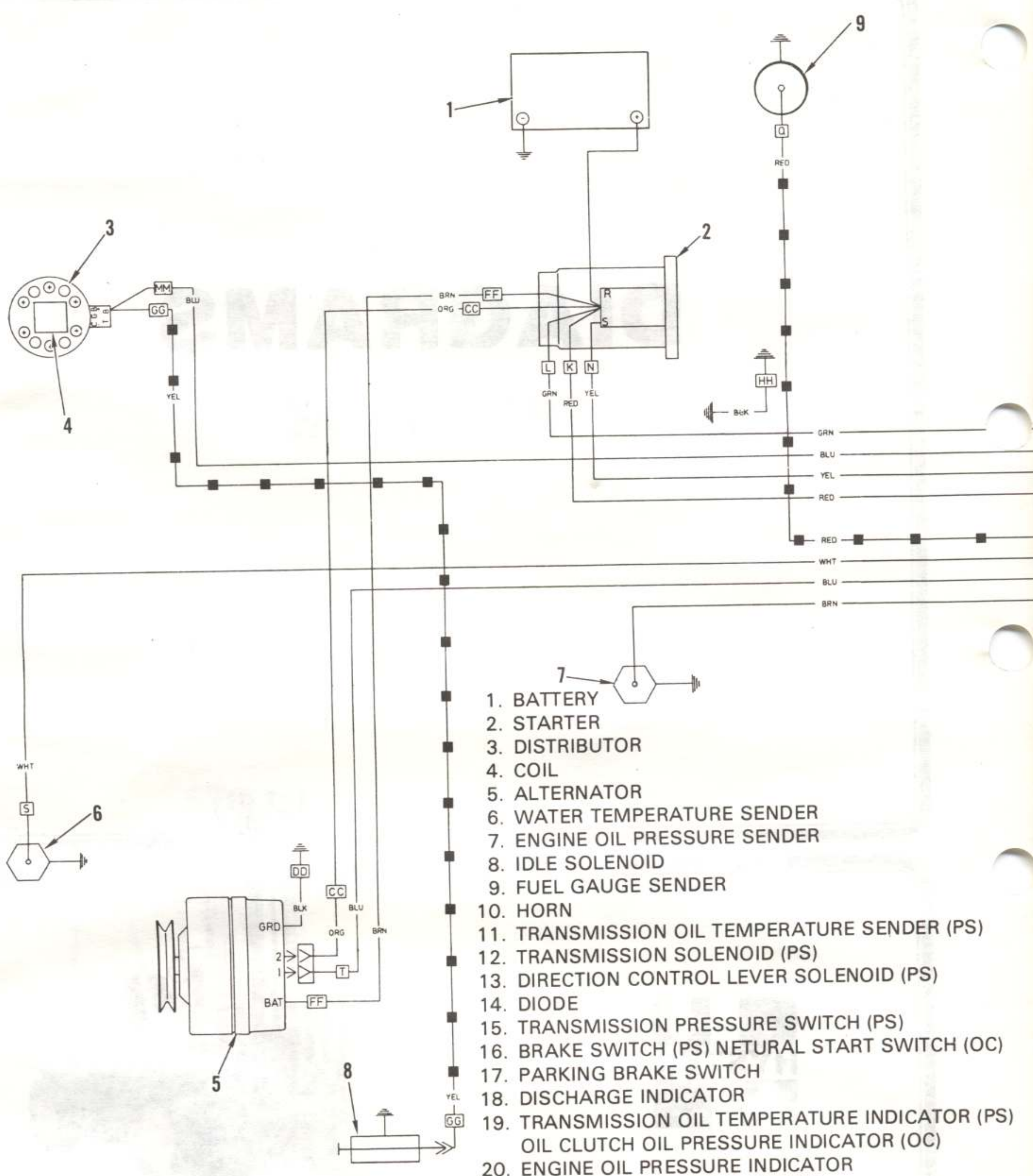
10. UNIT AND TEST
11. ALARM UNIT CHANGE
12. HYDRAULIC TANK

BY EQU. FOR SAL
SERV. LIFE VAL

UNIT AND TEST

SAFETY PRECAUTIONS MAINTENANCE AND REPAIR

1. When lifting parts or assemblies, make sure that all slings, chains, or cables are correctly fastened and balanced before lifting. Make sure that the crane, cable, or chain has the capacity to lift the weight.
2. Do not lift heavy parts by hand. Use a lifting mechanism.
3. Wear safety glasses.
4. **DISCONNECT THE BATTERY CABLES** before doing any maintenance or repair on electric lift trucks.
5. Always use correct blocks to prevent the unit or parts from rolling or falling.
6. Keep the unit and working area clean, and in order.
7. Use correct tools for the job.
8. Keep tools clean and in good condition.
9. Always use **HYSTER APPROVED** parts when making repairs.
10. Make sure that all nuts, bolts, snap rings and other fastening devices are removed before using force to remove parts.
11. Always fasten a **DO NOT OPERATE** sign to the controls of the unit when making repairs or if the unit needs repairs.
12. Make sure you check the **WARNING** and **CAUTION** notes in the instructions.
13. Batteries generate flammable gas when they are being charged. Keep fire and sparks away from the area. Make sure the area has ventilation.



1. BATTERY
2. STARTER
3. DISTRIBUTOR
4. COIL
5. ALTERNATOR
6. WATER TEMPERATURE SENDER
7. ENGINE OIL PRESSURE SENDER
8. IDLE SOLENOID
9. FUEL GAUGE SENDER
10. HORN
11. TRANSMISSION OIL TEMPERATURE SENDER (PS)
12. TRANSMISSION SOLENOID (PS)
13. DIRECTION CONTROL LEVER SOLENOID (PS)
14. DIODE
15. TRANSMISSION PRESSURE SWITCH (PS)
16. BRAKE SWITCH (PS) NETURAL START SWITCH (OC)
17. PARKING BRAKE SWITCH
18. DISCHARGE INDICATOR
19. TRANSMISSION OIL TEMPERATURE INDICATOR (PS)
OIL CLUTCH OIL PRESSURE INDICATOR (OC)
20. ENGINE OIL PRESSURE INDICATOR
21. WATER TEMPERATURE GAUGE
22. FUEL GAUGE
23. HOUR METER
24. KEY SWITCH
25. HORN BUTTON

PS = POWERSHIFT
OC = OIL CLUTCH

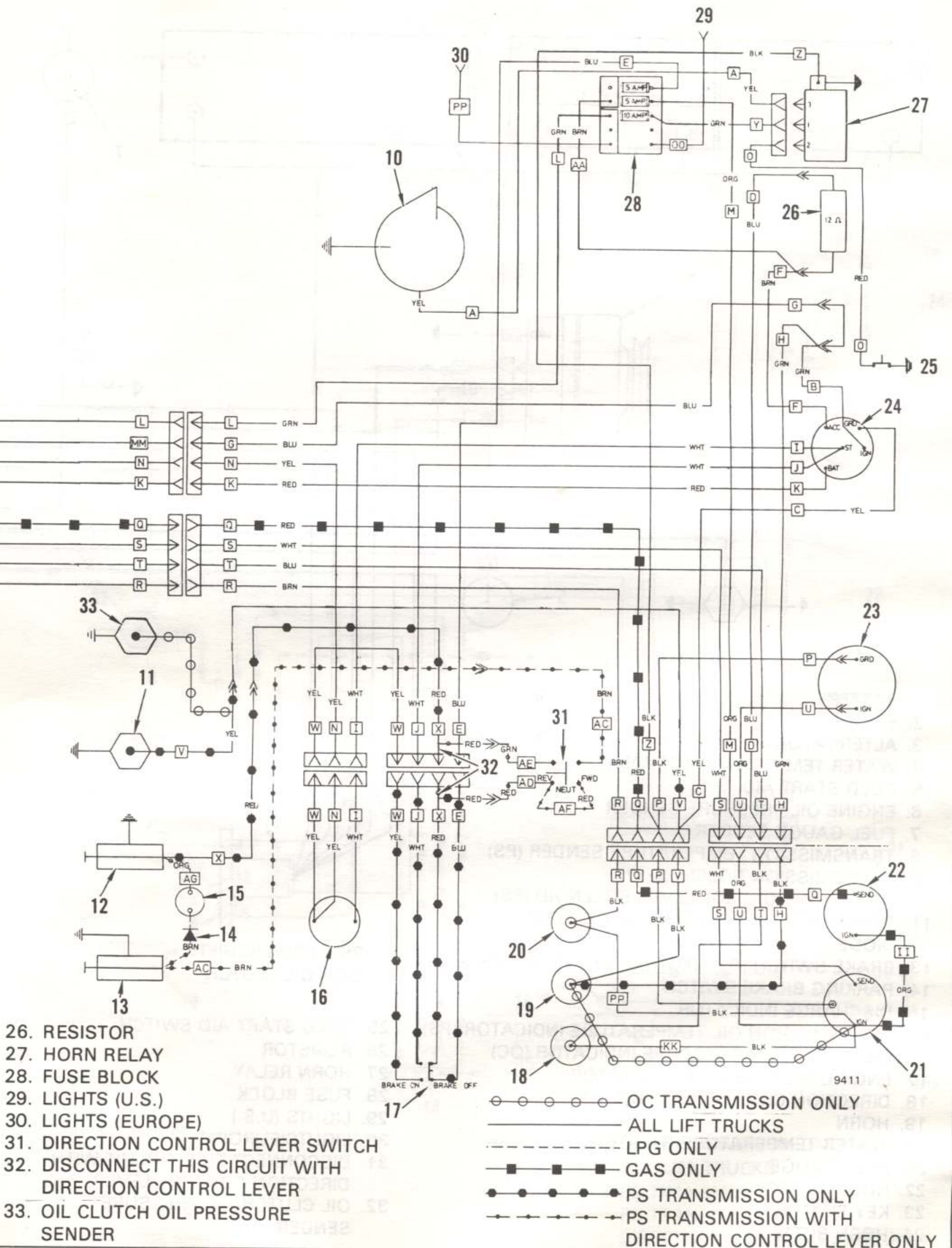
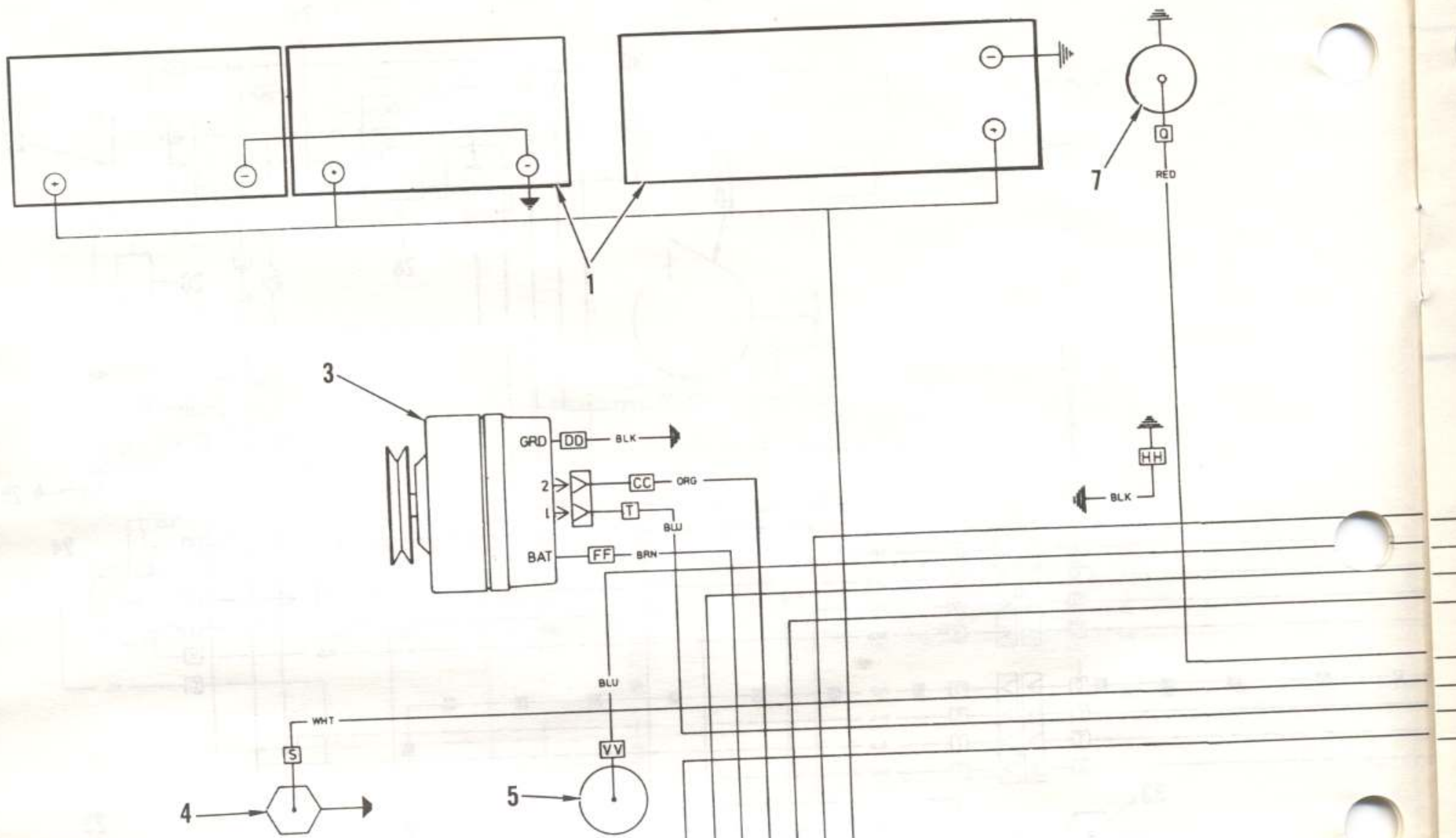


FIGURE 1. ELECTRICAL WIRING DIAGRAM (GAS AND LPG)



1. BATTERY
2. STARTER
3. ALTERNATOR
4. WATER TEMPERATURE SENDER
5. COLD START AID
6. ENGINE OIL PRESSURE SENDER
7. FUEL GAUGE SENDER
8. TRANSMISSION TEMPERATURE SENDER (PS)
9. TRANSMISSION SOLENOID (PS)
10. DIRECTION CONTROL LEVER SOLENOID (PS)
11. TRANSMISSION PRESSURE SWITCH (PS)
12. DIODE
13. BRAKE SWITCH (PS) NEUTRAL START SWITCH (OC)
14. PARKING BRAKE SWITCH
15. DISCHARGE INDICATOR
16. TRANSMISSION OIL TEMPERATURE INDICATOR (PS)
OIL CLUTCH OIL PRESSURE INDICATOR (OC)
17. ENGINE OIL PRESSURE INDICATOR
18. DIRECTION CONTROL LEVER SWITCH
19. HORN
20. WATER TEMPERATURE GAUGE
21. FUEL GAUGE
22. HOUR METER
23. KEY SWITCH
24. HORN BUTTON

PS = POWERSHIFT
OC = OIL CLUTCH

25. COLD START AID SWITCH
26. RESISTOR
27. HORN RELAY
28. FUSE BLOCK
29. LIGHTS (U.S.)
30. LIGHTS (EUROPE)
31. DISCONNECT THIS CIRCUIT WITH
DIRECTION CONTROL LEVER
32. OIL CLUTCH OIL PRESSURE
SENDER

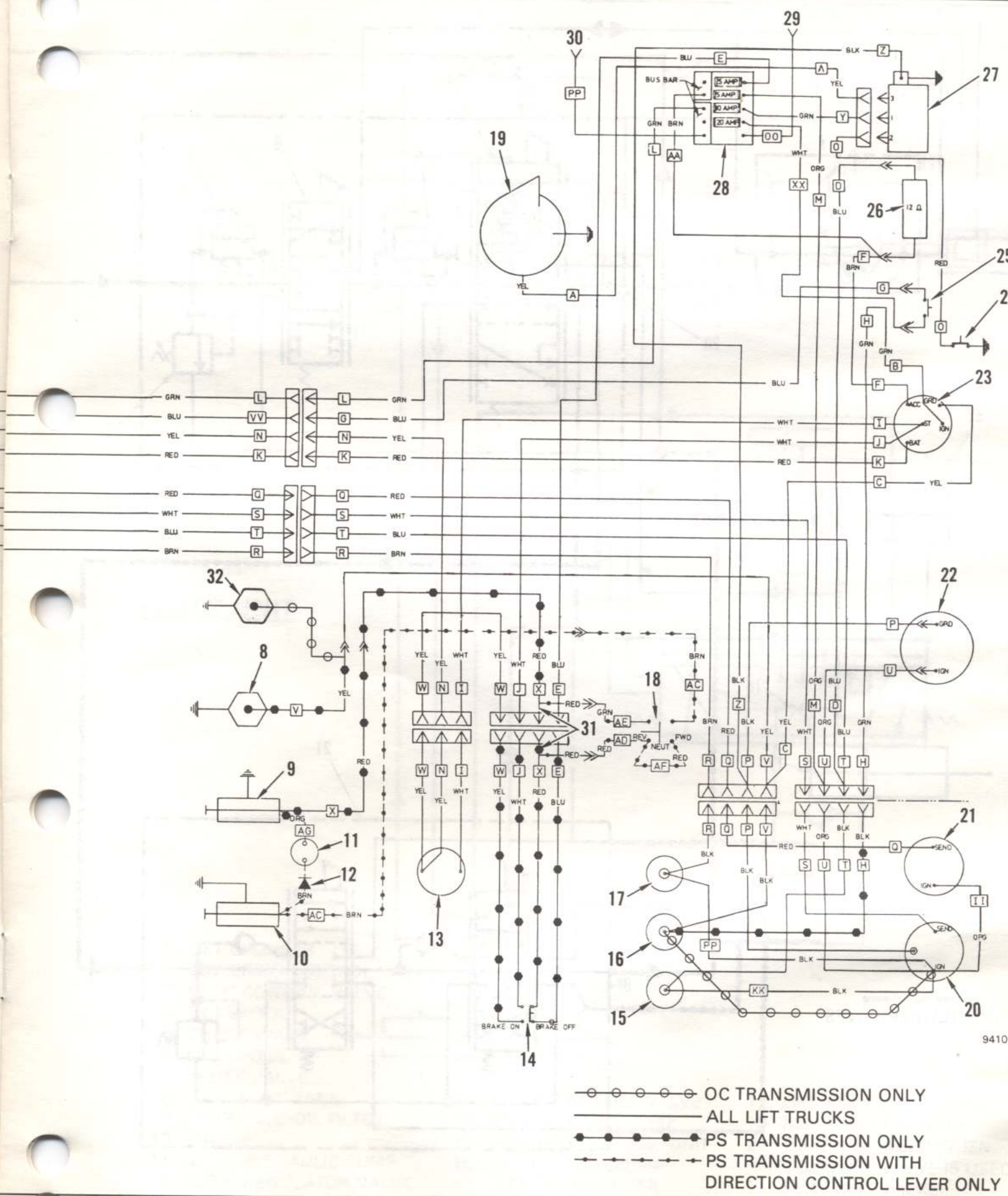
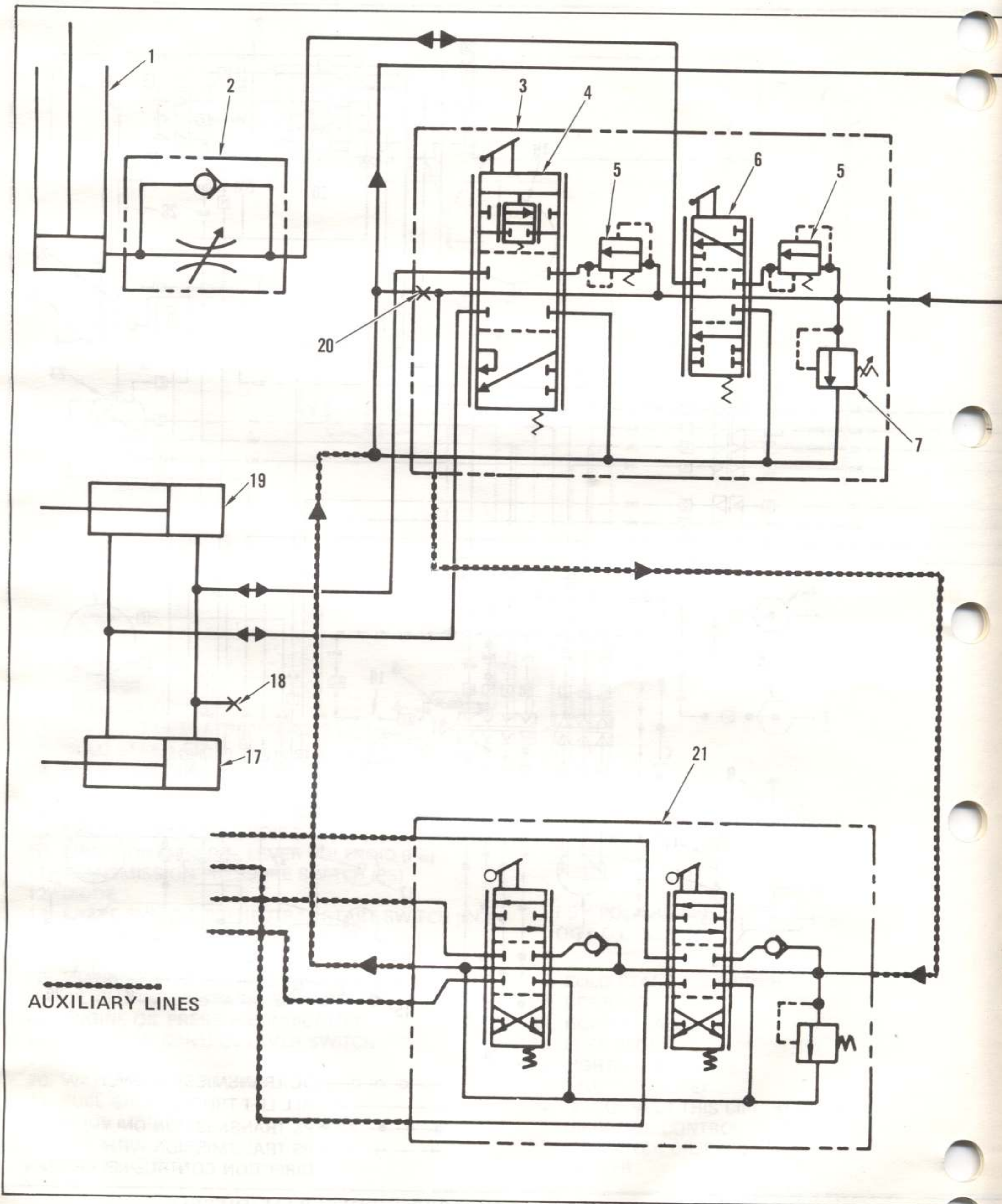
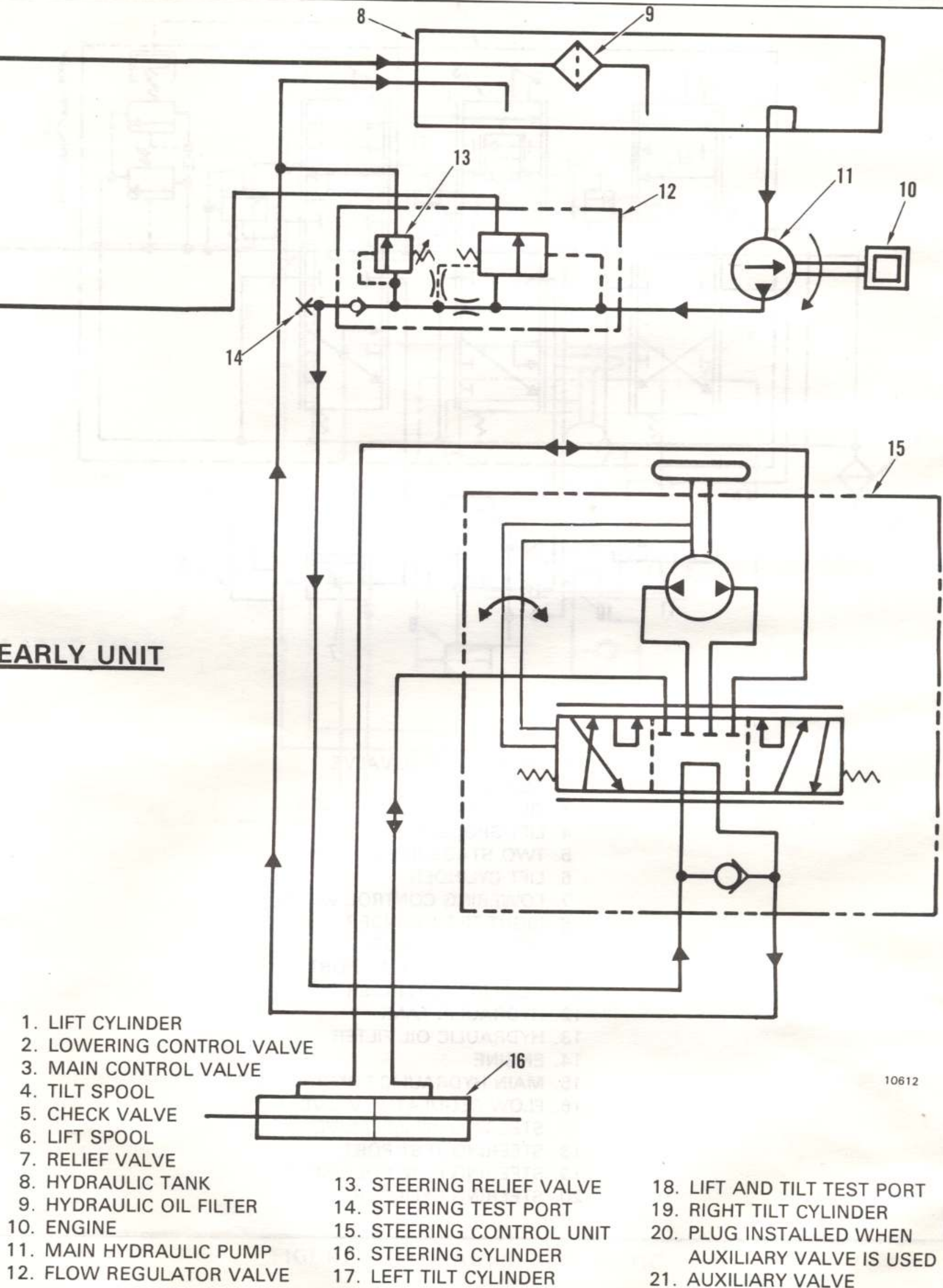


FIGURE 2. ELECTRICAL WIRING DIAGRAM (DIESEL)

9410



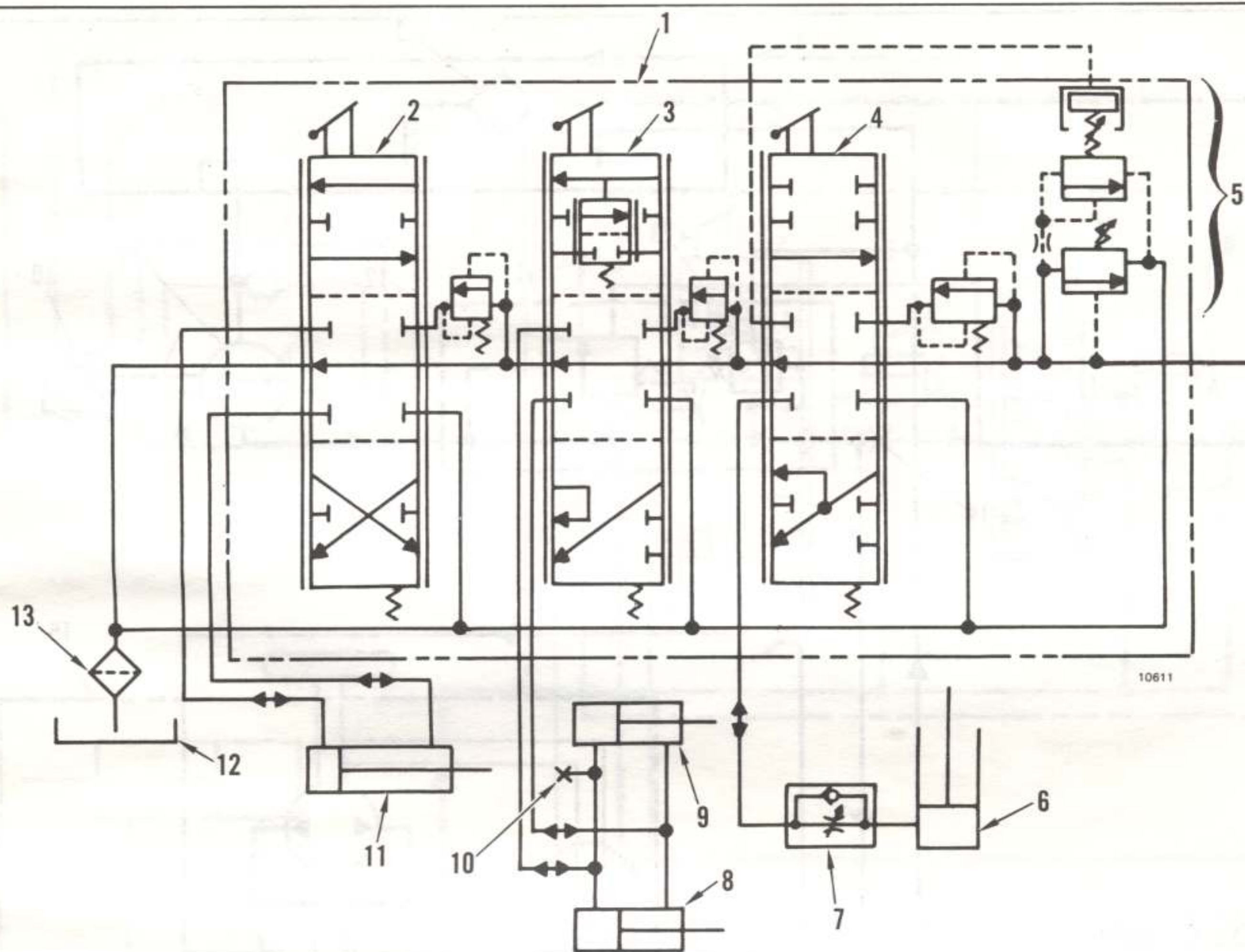
EARLY UNIT



- | | | |
|---------------------------|---------------------------|--|
| 1. LIFT CYLINDER | 13. STEERING RELIEF VALVE | 18. LIFT AND TILT TEST PORT |
| 2. LOWERING CONTROL VALVE | 14. STEERING TEST PORT | 19. RIGHT TILT CYLINDER |
| 3. MAIN CONTROL VALVE | 15. STEERING CONTROL UNIT | 20. PLUG INSTALLED WHEN
AUXILIARY VALVE IS USED |
| 4. TILT SPOOL | 16. STEERING CYLINDER | 21. AUXILIARY VALVE |
| 5. CHECK VALVE | 17. LEFT TILT CYLINDER | |
| 6. LIFT SPOOL | | |
| 7. RELIEF VALVE | | |
| 8. HYDRAULIC TANK | | |
| 9. HYDRAULIC OIL FILTER | | |
| 10. ENGINE | | |
| 11. MAIN HYDRAULIC PUMP | | |
| 12. FLOW REGULATOR VALVE | | |

FIGURE 3. HYDRAULIC SCHEMATIC

10612



1. MAIN CONTROL VALVE
2. AUXILIARY SPOOL
3. TILT SPOOL
4. LIFT SPOOL
5. TWO-STAGE RELIEF VALVE
6. LIFT CYLINDER
7. LOWERING CONTROL VALVE
8. RIGHT TILT CYLINDER
9. LEFT TILT CYLINDER
10. LIFT AND TILT TEST PORT
11. AUXILIARY CYLINDER
12. HYDRAULIC TANK
13. HYDRAULIC OIL FILTER
14. ENGINE
15. MAIN HYDRAULIC PUMP
16. FLOW REGULATOR VALVE
17. STEERING RELIEF VALVE
18. STEERING TEST PORT
19. STEERING CONTROL UNIT
20. STEERING CYLINDER

LATER UNIT

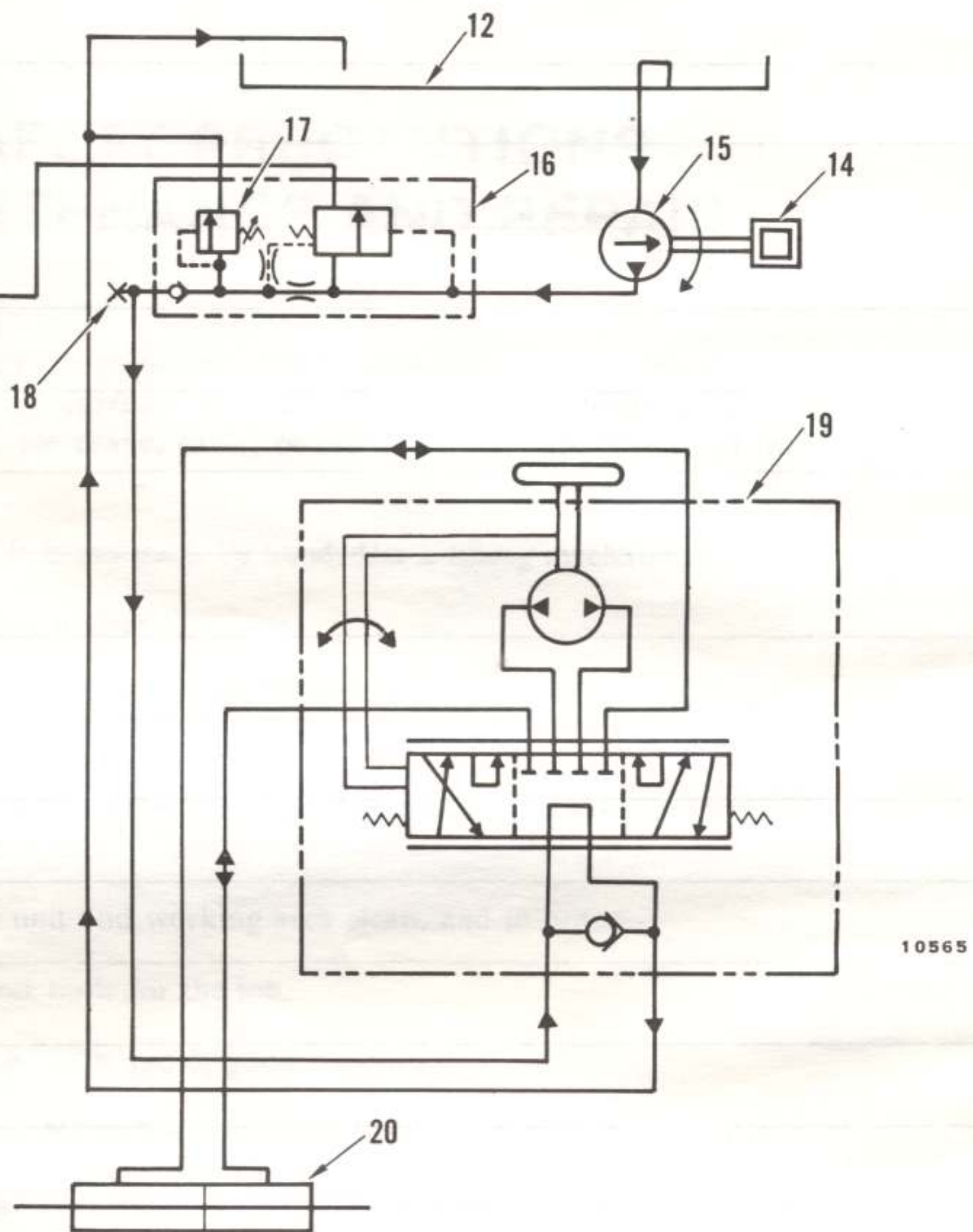


FIGURE 4. HYDRAULIC SCHEMATIC